



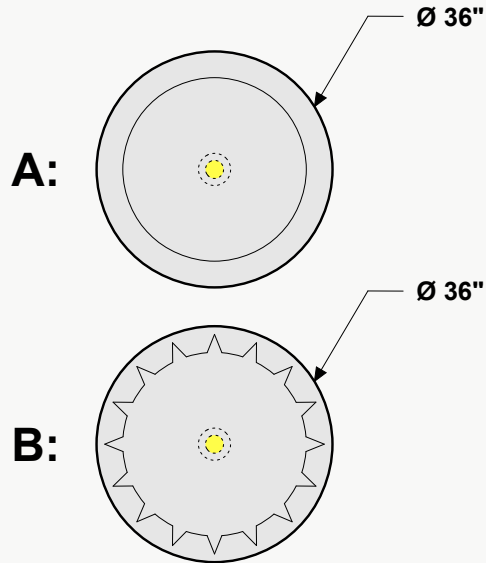
PROFILE FRAMED CLOUDS 007

CLD-FRM-007

Dimensions

Standard Unit Dimensions

Typical ranges for length and width.



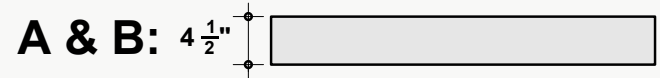
***Optional LED Light Available**

Custom Opportunity

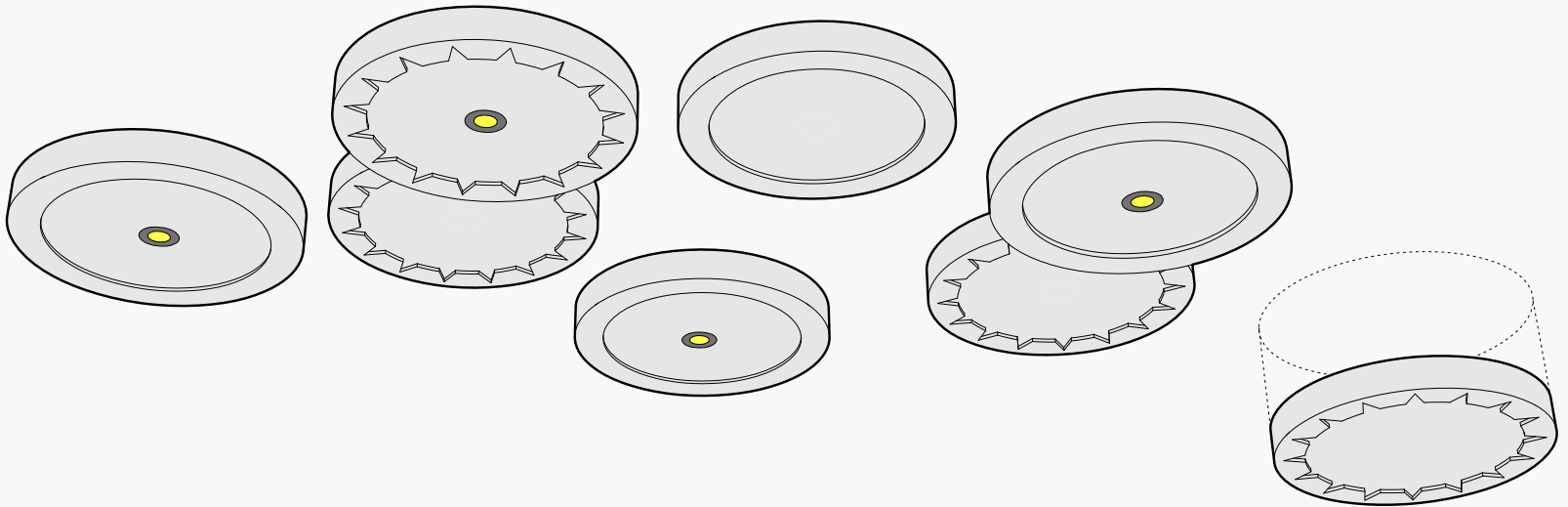
Product dimensions can be manipulated in order to fit your design aesthetic and site conditions.

Standard Unit Thicknesses

Thickness is independent of material layer selection.



Product Details

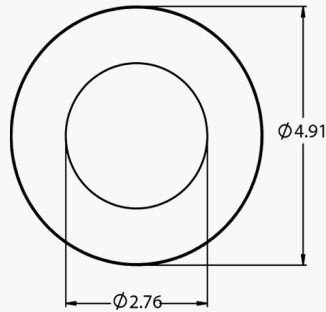


Lighting Specs

Lighting Fixture Features:

- + Circular profile: 5" Diameter
- + cETLus Listed
- + Title 24/JA8 Compliant

4" LED Recessed Light

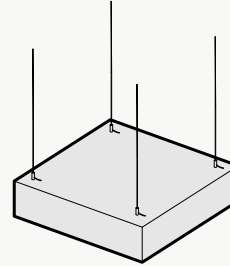


- + Lighting Source: Integrated LED
- + Height: 1.125"
- + Voltage: 120V
- + Wattage: 12W
- + CRI: 90
- + Delivered Lumens: 900
- + Color Temperature: 2700K/3000K/3500K/4000K/5000K
- + Dimming Type: Triac/ELV
- + Finish: White
- + Diffuser: Frosted
- + Diffuser Material: Acrylic

Attachment Methods*

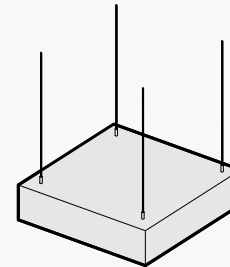
Aircraft Cable

- + Fastest/easiest height adjustment
- + Largest height adjustment range
- + Height and angle versatility
- + Accommodates uneven ceiling surfaces and MEP



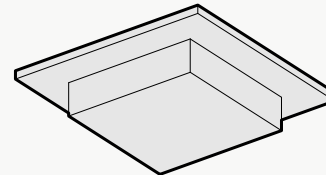
Threaded Rod

- + Reduced product sway
- + Height and angle versatility
- + Accommodates uneven ceiling surfaces and MEP



Mechanical Direct

- + Lowest profile installation method
- + Eliminates product sway
- + Connects to: Unistrut, ACT Grid, flat ceiling surfaces
- + Connections: Magnets, Grid Clips, Panel Clips, Metal Bracket, Custom

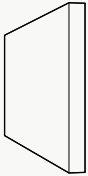


*Not all listed attachment methods may be applicable to this product.

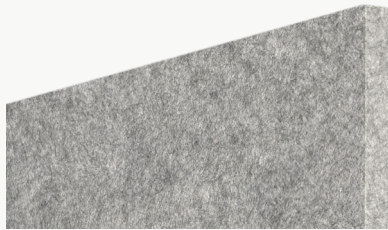
Material Layers

Soundcore®

Our recycled PET felt creates an acoustic barrier, defending against wandering white noise and irritating echoes.



Single Layer
½" Thickness



Soundcore® Wood Textures

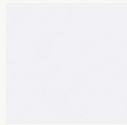
Soundcore® wood textures provide the natural aesthetic of wood while maintaining all the acoustic benefits of PET felt. Custom texture opportunities are also available upon request.



Single Layer
½" Thickness



Soundcore® | 1/2" Thickness



SND019
Linen



SND037
Paper



SND134
Oat



SND135
Vanilla Bean



SND105
Sand Dollar



SND109
Macadamia



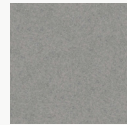
SND111
Lanai



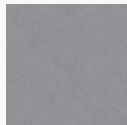
SND130
Buckskin



SND131
Abalone



SND125
Chinchilla



SND118
Anchor



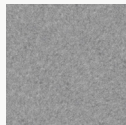
SND126
Wolfhound



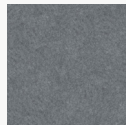
SND110
Starry Night



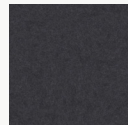
SND102
Morning Fog



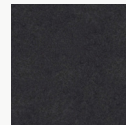
SND114
Lunar Dust



SND034
Granite Peak



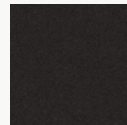
SND132
Cast Iron



SND103
Storm Cloud



SND038
Inkwell



SND122
Briquette



SND127
Burnt Toast



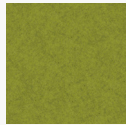
SND108
Ablaze



SND104
Pumpkin



SND106
Goldfinch



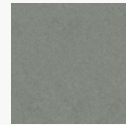
SND113
Gruner



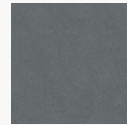
SND107
Grasshopper



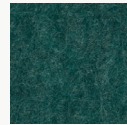
SND136
Clover



SND129
Dried Thyme



SND115
Mako



SND137
Cove



SND112
Tulum



SND121
Apatite



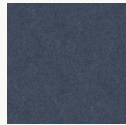
SND123
Chrysocolla



SND117
Serene



SND124
Ice Floe



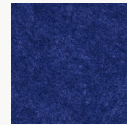
SND128
Arctic Ocean



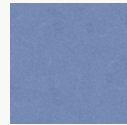
SND133
Galactic



SND116
Blue Marlin



SND101
Commodore



SND042
Denim

Soundcore® Wood Textures | 1/2" Thickness



SND716
Dark Teak



SND792
Dark Oak



SND715
Dark Cherry



SND793
Vintage Maple



SND794
Warm Teak



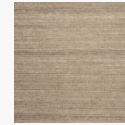
SND714
English Walnut



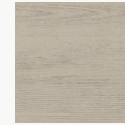
SND713
Honey Walnut



SND717
Warm Oak



SND790
Natural Teak



SND712
Natural Spruce



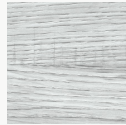
SND711
Bleached Cherry



SND795
Light Teak



SND709
White Maple



SND791
Gray Oak



SND710
Gray Teak